

ULTRACheck® BLIND QUALITY CONTROL CHECK STANDARDS

ULTRACheck® is a series of blind quality control standards used to check whether or not your analytical system is in control. ULTRACheck® samples are designed to mimic real-world samples for specific EPA methods, and are run as blind samples. The analytical data generated using the method is then compared to the true values supplied with the ULTRACheck® standard. Agreement between the data generated for ULTRACheck® used as a blind sample and the true values of the ULTRACheck® standard indicates that your analytical system is in control. Please visit our website at www.ultrasci.com for up to date ranges.

Use ULTRACheck® on a Regular Basis to:

- ✓ Train Personnel
- ✓ Establish and maintain EPA method proficiency
- ✓ Verify analytical system accuracy and precision
- ✓ Prepare for next state or EPA environmental audit

ULTRACheck® true values are provided in a separate, sealed envelope. The envelope can be sent to another site, upon your request. Data obtained using the ULTRACheck® blind sample can be immediately compared against the true values supplied. Complete instructions are included with each sample.

Know Your System is in Control

- ✓ The analytical system is shown to be in control when the data generated for the ULTRACheck® blind sample falls within the advisory range listed on the ULTRACheck® certificate of analysis.
- ✓ If the data generated for the ULTRACheck® blind sample does not fall within the advisory range, immediate corrective action can be taken prior to proficiency failure and loss of accreditation.

ULTRACheck® SAMPLES

	PAGE
• INORGANIC DRINKING WATER	55
• ORGANIC DRINKING WATER	59
• INORGANIC NON-POTABLE WATER	65
• ORGANIC NON-POTABLE WATER	69
• UNDERGROUND STORAGE TANKS	73
• HYDROCARBON FUELS	73
• TOTAL PETROLEUM HYDROCARBONS	73
• AROCLORS	74
• EPA CLUSTER RULE	74





ULTRACHECK® DOCUMENTATION

Instruction Sheet Provided to the Analyst:

Storage instructions

Dilution instructions
mimic those of PT
samples

List of applicable
EPA Methods

Instructions for Use

QCM-115 ULTRACheck™ Regulated Volatiles Sample

Please read these instructions carefully before using the proficiency test sample concentrate.



- Storing the Sample**
This sample should be stored in a refrigerator at 4°C prior to opening.
- Preparing the Sample for Use**
Work quickly to avoid volatilization of the analytes in the concentrate. Fill a 100 mL volumetric flask (class A) to the mark with carbon-filtered reagent water. Open the ampule and use a syringe to withdraw 25 µL of the concentrate. Adjust the syringe volume to 20 µL, and inject this aliquot into the water in the expanded area of the filled flask. Remove the needle as quickly as possible, and stopper the flask. Mix the sample by inverting the stoppered flask three times only. Analyze the sample immediately.
- Analyzing the Sample**
A blind check sample is used to evaluate the quality of the analytical data generated by the laboratory. Use the analytical method your laboratory routinely uses to analyze for these particular analytes.
- Applicable Methods**
US EPA Method(s) 502.2, 524.2
- Analyte Concentrations**
The certificate showing the reference values and advisory ranges is sealed in an envelope, to be opened after the analysis is completed. The advisory ranges represent QC acceptance criteria for analyte recovery following applicable US EPA methodologies. These ranges are based on interlaboratory data, and are included solely as guides for acceptable performance. Each laboratory should develop criteria for judging acceptable method performance based on the intended use of data.

250 SMITH STREET N. KINGSTOWN, RHODE ISLAND 02882 USA WWW.ULTRASCI.COM

Sealed Certificate of Analysis:

Weights Traceable to NIST

Analyte list with
assigned values



Certificate of Analysis

WS Regulated VOCs Sample Catalog Number: **QCM-115**
Code Number: **31902**

This ULTRACheck™ sample was gravimetrically prepared, and the analyte concentrations were confirmed using high resolution gas chromatography. All operations were carried out under ULTRA Scientific's ISO 9001 registered quality system. The assigned values represent the gravimetrically determined values when the sample has been prepared according to the accompanying instructions. All gravimetric values are traceable to NIST.

Analyte	Analyte #	Assigned Value (µg/L)	Advisory Range*
benzene	71-43-2	7.88	4.73 - 11.03
carbon tetrachloride	56-23-5	4.62	2.77 - 6.48
chlorobenzene	106-46-7	46.2	36.9 - 55.4
1,2-dichlorobenzene	95-50-1	18.9	15.1 - 22.7
1,4-dichlorobenzene	106-46-7	18.9	15.0 - 22.5
1,2-dichloroethane	107-06-2	18.2	12.9 - 19.4
1,1-dichloroethene	75-35-4	0.00	0.00 - 0.00
cis-1,2-dichloroethane	156-69-4	24.1	19.3 - 28.9
trans-1,2-dichloroethane	156-69-6	10.0	8.0 - 12.0
1,2-dichloropropane	78-87-6	9.42	6.65 - 13.18
ethylbenzene	105-41-4	6.49	3.93 - 9.35
methylene chloride	75-09-2	0.00	0.00 - 0.00
styrene	100-42-5	19.5	15.8 - 23.9
tetrachloroethane	127-18-4	15.1	12.1 - 18.1
toluene	108-88-3	11.1	8.9 - 13.4
1,2,4-trichlorobenzene	120-82-1	16.1	12.9 - 19.3
1,1,1-trichloroethene	71-55-6	9.80	5.93 - 13.63
1,1,2-trichloroethene	78-29-5	3.14	1.89 - 4.40
trichloroethene	79-01-6	8.22	4.93 - 11.50
vinyl chloride	75-01-4	48.2	28.9 - 67.5
total xylenes	1330-20-7	33.6	27.0 - 40.5

* Calculated from the NELAP Drinking Water Fields of Testing Document, effective 6/3/12.

250 SMITH STREET N. KINGSTOWN, RHODE ISLAND 02882 USA WWW.ULTRASCI.COM

Every ULTRA single blind sample lot is assigned a unique code number

Advisory ranges based on EPA/NELAC specifications

Certified by ULTRA Scientific

Results sealed in envelope for security

ULTRACheck® INORGANIC BLIND QC SAMPLES FOR WS DRINKING WATER ANALYSIS

All ULTRACheck® samples are formulated to match individual concentrations as stated in the current NELAC guidelines

FORMULATED TO MATCH NELAC & US EPA WS PROGRAM SAMPLES

ULTRACheck® samples are designed to mimic real world samples for specific EPA methods, and are run as blind samples. Agreement between the data generated for ULTRACheck® used as a blind sample and the true values of the ULTRACheck® standard indicates that the analytical system is in control.

ULTRACheck® true values are provided in a separate, sealed envelope. True values fall within the ranges listed for each analyte, and may vary from lot to lot. Complete instructions are included with each sample.

ULTRACheck® WS Metals #1

11 Analytes

antimony (Sb)
arsenic (As)
barium (Ba)
beryllium (Be)
cadmium (Cd)
chromium (Cr)
copper (Cu)
lead (Pb)
nickel (Ni)
selenium (Se)
thallium (Tl)

Dilute 10 mL of sample to 1 L for final working test sample.

QCI-706A **1 x 20 mL**

ULTRACheck® WS Metals #2

4 Analytes

boron (B)
manganese (Mn)
molybdenum (Mo)
zinc (Zn)

Dilute 10 mL of sample to 1 L for final working test sample.

QCI-706B **1 x 20 mL**

ULTRACheck® WS Mercury

mercury (Hg)

Dilute 1 mL of sample to 1 L for final working test sample.

QCI-706C **1 x 5 mL**

ULTRACheck® WS Corrosivity

5 Analytes

alkalinity as CaCO₃
hardness as CaCO₃
pH
total filterable residue
sodium

Sample consists of two solutions. Dilute 10 mL of each solution to 1 L in the same flask for final working test sample.

QCI-717 **2 x 20 mL**

ULTRACheck® Complete Inorganic WS Drinking Water Kit

Kit - contains 10 samples:

1 each of the following samples

WS Metals #1	QCI-706A
WS Metals #2	QCI-706B
WS Mercury	QCI-706C
WS Corrosivity	QCI-717
WS Anions	QCI-757
WS Sulfate / TOC	QCI-718
WS Residual Free Chlorine	QCI-786
WS Turbidity	QCI-795
WS Free Cyanide	QCI-756
WS Disinfection By-Products	QCI-787

QCK-812 **Kit**

ULTRACheck® samples are formulated to Match NELAC & US EPA WS Program Samples. Please visit our website at www.ultrasci.com for the most updated list of product ranges.

ULTRACheck® WS Anions**4 Analytes**

fluoride
nitrate as N
nitrite as N
orthophosphate as P

Sample consists of two solutions. Dilute 10 mL of each solution to 1 L in the same flask for final working test sample.

QCI-757 **2 x 20 mL**

ULTRACheck® WS Sulfate / TOC**2 Analytes**

sulfate
total organic carbon (TOC)

Dilute 10 mL of sample to 1 L for final working test sample.

QCI-718 **1 x 20 mL**

ULTRACheck® WS Disinfection By-Products**4 Analytes**

bromate
bromide
chlorate
chlorite

Sample consists of two solutions. Dilute 10 mL of each solution to 1 L in the same flask for final working test sample.

QCI-787 **2 x 20 mL**

ULTRACheck® WS Residual Free Chlorine

residual free chlorine

Dilute 10 mL of sample to 1 L for final working test sample.

QCI-786 **1 x 20 mL**

ULTRACheck® WS Turbidity

turbidity

Dilute 10 mL of sample to 200 mL for final working test sample.

QCI-795 **1 x 20 mL**

ULTRACheck® WS Cyanide (Free)

cyanide (free)

Dilute 10 mL of sample to 1 L for final working test sample.

QCI-756 **1 x 20 mL**



ADDITIONAL ULTRACHECK® BLIND QC SAMPLES FOR DRINKING WATER ANALYSIS

All ULTRACheck® samples are formulated to match individual concentrations as stated in the current NELAC guidelines

ULTRACheck® samples are designed to mimic real world samples for specific EPA methods, and are run as blind samples. Agreement between the data generated for ULTRACheck® used as a blind sample and the true values of the ULTRACheck® standard indicates that the analytical system is in control.

ULTRACheck® true values are provided in a separate, sealed envelope. True values fall within the ranges listed for each analyte, and may vary from lot to lot. Complete instructions are included with each sample.

ULTRACheck® Metals

18 Analytes

aluminum (Al)
antimony (Sb)
arsenic (As)
barium (Ba)
beryllium (Be)
cadmium (Cd)
calcium (Ca)
chromium (Cr)
copper (Cu)
iron (Fe)
lead (Pb)
manganese (Mn)
mercury (Hg)
nickel (Ni)
selenium (Se)
silver (Ag)
thallium (Tl)
zinc (Zn)

Sample consists of two solutions. Dilute 10 mL of QCI-701A and 1 mL of QCI-701B to 2 L in the same flask for final working test sample.

QCI-701

Kit

ULTRACheck® Minerals

9 Analytes

alkalinity as CaCO₃
pH
conductivity
potassium
sodium
chloride
sulfate
fluoride
nitrate as N

Ready-to-use, whole volume standard

QCI-710 **500 mL**

ULTRACheck® Hardness

3 Analytes

calcium (Ca)
magnesium (Mg)
hardness as CaCO₃

Ready-to-use, whole volume standard

QCI-720 **500 mL**

INORGANIC BLIND QC SAMPLES FOR ICR DRINKING WATER ANALYSIS

ULTRACheck® ICR Minerals

5 Analytes

alkalinity as CaCO₃
pH
calcium hardness
total hardness as CaCO₃
bromide

Ready-to-use, whole volume standard

QCI-712 **500 mL**

ULTRACheck® TOC

total organic carbon

Dilute 10 mL of sample to 2 L for final working test sample.

QCI-731 **1 x 10 mL**

ULTRACheck® samples are formulated to Match NELAC & US EPA WS Program Samples. Please visit our website at www.ultrasci.com for the most updated list of product ranges.

ULTRACheck® Cyanide**3 Analytes**

free cyanide
complex cyanide
total cyanide

Dilute 10 mL of sample to 2 L for final working test sample.

QCI-750 **1 x 10 mL**

ULTRACheck® Solids**3 Analytes**

suspended solids
dissolved solids
total solids

Ready-to-use, whole volume standard

QCI-711 **500 mL**
QCI-711-100 **100 mL**

ULTRACheck® Nitrite

nitrite as N

Dilute 10 mL of sample to 1 L for final working test sample.

QCI-751 **1 x 10 mL**

ULTRACheck® Turbidity

turbidity

Dilute 10 mL of sample to 1 L for final working test sample.

QCI-790 **1 x 10 mL**

ULTRACheck® Total Residual Chlorine

total residual chlorine

Dilute 10 mL of sample to 2 L for final working test sample.

QCI-780 **1 x 10 mL**

ULTRACheck® Complete Inorganic Drinking Water Kit**Kit - contains 8 samples:**

1 each of the following samples

Metals	QCI-701
Minerals	QCI-710
Nitrite	QCI-751
Total Residual Chlorine	QCI-780
Turbidity	QCI-790
Solids	QCI-711
Hardness	QCI-720
Cyanide	QCI-750

QCK-810 **Kit**

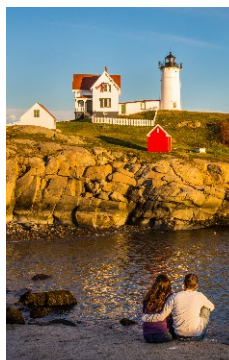
WWW.ULTRASCI.COM

Download and Print from Our Online Library

The ULTRA Scientific website allows you to easily obtain up-to-date documents that are related not only to our business, but to the industry in general.

Choose from:

- ✓ ULTRA Scientific catalog
- ✓ ULTRA Scientific brochures
- ✓ SDS's (GHS compliant)
- ✓ EPA Methods
- ✓ And more!



ULTRACheck® ORGANIC BLIND QC SAMPLES FOR WS DRINKING WATER ANALYSIS

All ULTRACheck® samples are formulated to match individual concentrations as stated in the current NELAC guidelines

FORMULATED TO MATCH NELAC & US EPA WS PROGRAM SAMPLES

ULTRACheck® samples are designed to mimic real world samples for specific EPA methods, and are run as blind samples. Agreement between the data generated for ULTRACheck® used as a blind sample and the true values of the ULTRACheck® standard indicates that the analytical system is in control.

ULTRACheck® true values are provided in a separate, sealed envelope. True values fall within the ranges listed for each analyte, and may vary from lot to lot. Complete instructions are included with each sample.

ULTRACheck® WS Regulated VOCs

21 Analytes

benzene
carbon tetrachloride
chlorobenzene
1,2-dichlorobenzene
1,4-dichlorobenzene
1,2-dichloroethane
1,1-dichloroethene
cis-1,2-dichloroethene
trans-1,2-dichloroethene
dichloromethane
1,2-dichloropropane
ethylbenzene
styrene
tetrachloroethene
toluene
1,2,4-trichlorobenzene
1,1,1-trichloroethane
1,1,2-trichloroethane
trichloroethene
vinyl chloride
xylenes (total)

Dilute 20 µL of sample to 100 mL for final working test sample.

QCM-115 **1 x 2 mL**

ULTRACheck® WS Unregulated VOCs

30 Analytes

bromobenzene
bromochloromethane
bromomethane
n-butylbenzene
sec-butylbenzene
tert-butylbenzene
chloroethane
chloromethane
2-chlorotoluene
4-chlorotoluene
dibromomethane
1,3-dichlorobenzene
dichlorodifluoromethane
1,1-dichloroethane
1,3-dichloropropane
2,2-dichloropropane
1,1-dichloropropene
cis-1,3-dichloropropene
trans-1,3-dichloropropene
hexachlorobutadiene
isopropylbenzene
4-isopropyltoluene
n-propylbenzene
1,1,1,2-tetrachloroethane
1,1,2,2-tetrachloroethane
1,2,3-trichlorobenzene
trichlorofluoromethane
1,2,3-trichloropropane
1,2,4-trimethylbenzene
1,3,5-trimethylbenzene

Dilute 20 µL of sample to 100 mL for final working test sample.

QCM-116 **1 x 2 mL**

ULTRACheck® WS Trihalomethanes

5 Analytes

bromodichloromethane
bromoform
chloroform
dibromochloromethane
total trihalomethanes

Dilute 20 µL of sample to 100 mL for final working test sample.

QCM-125 **1 x 2 mL**

ULTRACheck® WS DBCP / EDB

2 Analytes

1,2-dibromo-3-chloropropane
1,2-dibromoethane

Dilute 20 µL of sample to 100 mL for final working test sample.

QCM-135 **1 x 2 mL**

ULTRACheck® WS Pesticides #1**11 Analytes**

aldrin
dieldrin
endrin
heptachlor
heptachlor epoxide
hexachlorobenzene
hexachlorocyclopentadiene
lindane
methoxychlor
propachlor
trifluralin

Dilute 1 mL of sample to 1 L for final working test sample.

QCM-211 **1 x 2 mL**

ULTRACheck® WS Pesticides #2**3 Analytes**

alachlor
atrazine
simazine

Dilute 1 mL of sample to 1 L for final working test sample.

QCM-212 **1 x 2 mL**

ULTRACheck® WS Carbamates**6 Analytes**

aldicarb
aldicarb sulfone
aldicarb sulfoxide
carbofuran
methomyl
oxamyl

Dilute 1 mL of sample to 100 mL for final working test sample.

QCM-251 **1 x 2 mL**

ULTRACheck® WS Herbicides**8 Analytes**

acifluorfen
2,4-D
dalapon
dicamba
dinoseb
pentachlorophenol
picloram
silvex (2,4,5-TP)

Dilute 1 mL of sample to 1 L for final working test sample.

QCM-501 **1 x 2 mL**

ULTRACheck® WS Chlordane

chlordane

Dilute 1 mL of sample to 1 L for final working test sample.

QCM-230 **1 x 2 mL**

ULTRACheck® WS Toxaphene

toxaphene

Dilute 1 mL of sample to 1 L for final working test sample.

QCM-220 **1 x 2 mL**

ULTRACheck® WS Regulated SOCs**3 Analytes**

diquat
endothall
glyphosate

Dilute 1 mL of sample to 1 L for final working test sample.

QCM-260 **1 x 2 mL**

ULTRACheck® WS PCBs

Aroclor 1260

Dilute 1 mL of sample to 1 L for final working test sample.

QCM-249 **1 x 2 mL**

ULTRACheck® ORGANIC BLIND QC SAMPLES FOR WS DRINKING WATER ANALYSIS

All ULTRACheck® samples are formulated to match individual concentrations as stated in the current NELAC guidelines

ULTRACheck® WS Phthalate and Adipate

2 Analytes

bis(2-ethylhexyl) adipate
bis(2-ethylhexyl) phthalate

Dilute 1 mL of sample to 1 L for final working test sample.

QCM-312

1 x 2 mL

ULTRACheck® WS Disinfection By-Products

6 Analytes

bromoacetic acid
bromochloroacetic acid
chloroacetic acid
dibromoacetic acid
dichloroacetic acid
trichloroacetic acid

Dilute 1 mL of sample to 100 mL for final working test sample.

QCM-550

1 x 2 mL

ULTRACheck® WS PAHs

benzo[a]pyrene

Dilute 1 mL of sample to 1 L for final working test sample.

QCM-311

1 x 2 mL

ULTRACheck® WS Chloral Hydrate

chloral hydrate

Dilute 1 mL of sample to 100 mL for final working test sample.

QCM-551

1 x 2 mL

ULTRACheck® Organic WS Drinking Water Kit

Kit - contains thirteen samples:

1 x 2 mL of each of the following samples

Regulated VOCs	QCM-115
Unregulated VOCs	QCM-116
Trihalomethanes	QCM-125
EDB/DBCP	QCM-135
Pesticides #1	QCM-211
Pesticides #2	QCM-212
Toxaphene	QCM-220
Chlordane	QCM-230
PCBs	QCM-249
Carbamates	QCM-251
PAHs	QCM-311
Phthalates and Adipates	QCM-312
Herbicides	QCM-501

QCK-915

Kit

ORDERING IS EASY

Online

www.ultrasci.com
ultra@ultrasci.com

Phone

800-338-1754
Monday – Friday
8:30 a.m. - 5:00 p.m. ET

Fax

401-295-2330

Mail

ULTRA Scientific
250 Smith Street
No. Kingstown, RI
02852



ULTRACheck® samples are formulated to Match NELAC & US EPA WS Program Samples.
Please visit our website at www.ultrasci.com for the most updated list of product ranges.

ADDITIONAL ULTRACHECK® BLIND QC SAMPLES FOR DRINKING WATER ANALYSIS

All ULTRACHECK® samples are formulated to match individual concentrations as stated in the current NELAC guidelines

Drinking Water VOC Kit

Kit - contains thirteen samples:

1 x 2 mL of each of the following samples

Trihalomethanes Mixture	THM-515-1
Performance Check Mixture	EPA-100A
Promulgated VOC Mixture	DWM-591-1
Promulgated VOC Mixture	DWM-593A-1

DWK-501

Kit

ULTRACHECK® Unregulated VOCs

30 Analytes

bromobenzene
bromochloromethane
bromomethane
n-butylbenzene
sec-butylbenzene
tert-butylbenzene
chloroethane
chloroform
chloromethane
2-chlorotoluene
4-chlorotoluene
dibromomethane
1,3-dichlorobenzene
1,1-dichloroethane
1,3-dichloropropane
2,2-dichloropropane
1,1-dichloropropene
cis-1,3-dichloropropene
trans-1,3-dichloropropene
hexachlorobutadiene
isopropylbenzene
4-isopropyltoluene
n-propylbenzene
1,1,1,2-tetrachloroethane
1,1,2,2-tetrachloroethane
1,2,3-trichlorobenzene
trichlorofluoromethane
1,2,3-trichloropropane
1,2,4-trimethylbenzene
1,3,5-trimethylbenzene

Dilute 5 µL of sample to 100 mL for final working test sample.

QCM-112

1 x 2 mL

ULTRACHECK® Regulated VOCs

23 Analytes

benzene
carbon tetrachloride
chlorobenzene
1,2-dichlorobenzene
1,4-dichlorobenzene
1,2-dichloroethane
1,1-dichloroethene
cis-1,2-dichloroethene
trans-1,2-dichloroethene
1,2-dichloropropane
ethylbenzene
methylene chloride
styrene
tetrachloroethene
toluene
1,2,4-trichlorobenzene
1,1,1-trichloroethane
1,1,2-trichloroethane
trichloroethene
vinyl chloride
o-xylene
m-xylene
p-xylene

Dilute 5 µL of sample to 100 mL for final working test sample.

QCM-111

1 x 2 mL

ULTRACHECK® Trihalomethanes

4 Analytes

bromodichloromethane
bromoform
chloroform
dibromochloromethane

Dilute 20 µL of sample to 100 mL for final working test sample.

QCM-120

1 x 2 mL

ULTRACHECK® EDB/DBCP

2 Analytes

1,2-dibromo-3-chloropropane
1,2-dibromoethane

Dilute 5 µL of sample to 100 mL for final working test sample.

QCM-130

1 x 2 mL

ULTRACHECK® Volatiles

20 - 30 Analytes from the Following List:

benzene	1,2-dichlorobenzene	1,1,2,2-tetrachloroethane
bromodichloromethane	1,3-dichlorobenzene	tetrachloroethene
bromoform	1,4-dichlorobenzene	toluene
n-butylbenzene	1,2-dichloroethane	1,2,4-trichlorobenzene
sec-butylbenzene	1,1-dichloroethene	1,1,1-trichloroethane
tert-butylbenzene	cis-1,2-dichloroethene	1,1,2-trichloroethane
carbon tetrachloride	trans-1,2-dichloroethene	trichloroethene
chlorobenzene	1,1-dichloropropene	1,2,4-trimethylbenzene
chloroform	ethylbenzene	1,3,5-trimethylbenzene
2-chlorotoluene	isopropylbenzene	vinyl chloride
4-chlorotoluene	4-isopropyltoluene	o-xylene
dibromochloromethane	methylene chloride	m-xylene
1,2-dibromo-3-chloropropane	n-propylbenzene	p-xylene
1,2-dibromoethane	styrene	
dibromomethane	1,1,1,2-tetrachloroethane	

Dilute 5 µL of sample to 100 mL for final working test sample.

QCM-110

1 x 2 mL

ADDITIONAL ULTRACHECK® BLIND QC SAMPLES FOR DRINKING WATER ANALYSIS

All ULTRACHECK® samples are formulated to match individual concentrations as stated in the current NELAC guidelines

ULTRACHECK® samples are designed to mimic real world samples for specific EPA methods, and are run as blind samples. Agreement between the data generated for ULTRACHECK® used as a blind sample and the true values of the ULTRACHECK® standard indicates that the analytical system is in control.

ULTRACHECK® true values are provided in a separate, sealed envelope. True values fall within the ranges listed for each analyte, and may vary from lot to lot. Complete instructions are included with each sample.

ULTRACHECK® Carbamate Pesticides

5 - 7 Analytes from the Following List:

aldicarb
aldicarb sulfoxide
aldicarb sulfone
carbaryl
carbofuran
methomyl
propoxur

Dilute 1 mL of sample to 1 L for final working test sample.

QCM-250

1 x 2 mL

ULTRACHECK® Semi-Volatiles

10 - 15 Analytes from the Following List:

acenaphthylene
anthracene
benz[a]anthracene
benzo[b]fluoranthene
benzo[k]fluoranthene
benzo[ghi]perylene
benzo[a]pyrene
bis(2-ethylhexyl) adipate
bis(2-ethylhexyl) phthalate
butyl benzyl phthalate
dibenz[a,h]anthracene
di-n-butyl phthalate
diethyl phthalate
dimethyl phthalate
fluorene
hexachlorobenzene
hexachlorocyclopentadiene
indeno[1,2,3-cd]pyrene
pentachlorophenol
phenanthrene
pyrene

Dilute 1 mL of sample to 1 L for final working test sample.

QCM-310

1 x 2 mL

ULTRACHECK® Pesticides

8 - 12 Analytes from the Following List:

alachlor
aldrin
atrazine
 α -BHC
 β -BHC
 δ -BHC
 γ -BHC (*lindane*)
4,4'-DDD
4,4'-DDE
4,4'-DDT
dieldrin
endosulfan I
endosulfan II
endosulfan sulfate
endrin
endrin aldehyde
heptachlor
heptachlor epoxide
methoxychlor

Dilute 1 mL of sample to 1 L for final working test sample.

QCM-210

1 x 2 mL

Volume discounts for individual solutions

Order 4–19 ampules of the same item and receive a **20% DISCOUNT**
Order 20 or more ampules of the same item and receive a **30% DISCOUNT**



ULTRACheck® Pesticides #3**4 Analytes**

butachlor
metolachlor
metribuzin
prometon

Dilute 1 mL of sample to 1 L for final working test sample.

QCM-213 1 x 2 mL

ULTRACheck® Regulated SOCs**3 Analytes**

diquat
endothall
glyphosate

Dilute 1 mL of sample to 1 L for final working test sample.

QCM-260 1 x 2 mL

ULTRACheck® Herbicides**4 - 7 Analytes from the Following List:**

2,4-D MCPA
dalapon MCPP
2,4-DB silvex (2,4,5-TP)
dinoseb 2,4,5-T

Dilute 1 mL of sample to 1 L for final working test sample.

QCM-500 1 x 2 mL

ULTRACheck® Chlordane

chlordane

Dilute 1 mL of sample to 1 L for final working test sample.

QCM-230 1 x 2 mL

ULTRACheck® Toxaphene

toxaphene

Dilute 1 mL of sample to 1 L for final working test sample.

QCM-220 1 x 2 mL

ULTRACheck® PCBs

Aroclor 1260

Dilute 1 mL of sample to 1 L for final working test sample.

QCM-249 1 x 2 mL

ULTRACheck® Organic Drinking Water Kit**Kit - contains seven ampules:**

1 x 2 mL of each of the following samples

Volatiles	QCM-110
Pesticides	QCM-210
Toxaphene	QCM-220
Chlordane	QCM-230
Carbamate Pesticides	QCM-250
Semi-Volatiles	QCM-310
Herbicides	QCM-500

QCK-910 Kit

ULTRACheck® Organic Regulated Drinking Water Kit**Kit - contains eleven ampules:**

1 x 2 mL of each of the following samples

QCM-111	
Trihalomethanes	QCM-120
EDB/DBCP	QCM-130
Pesticides	QCM-210
Toxaphene	QCM-220
Chlordane	QCM-230
PCB Screening	QCM-249
Carbamate Pesticides	QCM-250
Regulated SOCs	QCM-260
Semi-Volatiles	QCM-310
Herbicides	QCM-500

QCK-913 Kit

ULTRACheck® samples are formulated to Match NELAC & US EPA WS Program Samples. Please visit our website at www.ultrasci.com for the most updated list of product ranges.

ULTRACheck® INORGANIC BLIND QC SAMPLES FOR WP/DMR-QA NON-POTABLE WATER ANALYSIS

All ULTRACheck® samples are formulated to match individual concentrations as stated in the current NELAC guidelines

FORMULATED TO MATCH NELAC & US EPA WS PROGRAM SAMPLES

ULTRACheck® samples are designed to mimic real world samples for specific EPA methods, and are run as blind samples. Agreement between the data generated for ULTRACheck® used as a blind sample and the true values of the ULTRACheck® standard indicates that the analytical system is in control.

ULTRACheck® true values are provided in a separate, sealed envelope. True values fall within the ranges listed for each analyte, and may vary from lot to lot. Complete instructions are included with each sample.

ULTRACheck® WP/DMR-QA Trace Metals #1

13 Analytes

aluminum (Al)
arsenic (As)
cadmium (Cd)
chromium (Cr)
cobalt (Co)
copper (Cu)
iron (Fe)
lead (Pb)
manganese (Mn)
nickel (Ni)
selenium (Se)
vanadium (V)
zinc (Zn)

Dilute 10 mL of sample to 1 L for final working test sample.

QCI-705A

1 x 20 mL

ULTRACheck® WP Trace Metals #2

7 Analytes

antimony (Sb)
beryllium (Be)
molybdenum (Mo)
silver (Ag)
strontium (Sr)
thallium (Tl)
titanium (Ti)

Dilute 10 mL of sample to 1 L for final working test sample.

QCI-705B

1 x 20 mL

ULTRACheck® WP/DMR-QA Mercury

mercury (Hg)

Dilute 1 mL of sample to 1 L for final working test sample.

QCI-705C

1 x 5 mL

ULTRACheck® Complete Inorganic WP Waste Water Kit

Kit - contains 12 samples:

1 each of the following samples

WP Trace Metals #1	QCI-705A
WP Trace Metals #2	QCI-705B
WP Mercury	QCI-705C
WP Minerals	QCI-715
WP Nutrients	QCI-745
WP Demands	QCI-736
WP Total Residual Chlorine	QCI-785
WP Non-Filterable Residue	QCI-716
WP Total Cyanide	QCI-755
WP Oil & Grease	QCI-770
WP Total Phenolics	QCI-765
WP pH	QCI-713

QCK-803

Kit

ULTRACheck® Inorganic DMR-QA Waste Water Kit

Kit - contains 10 samples:

1 each of the following samples

WP Trace Metals #1	QCI-705A
WP Mercury	QCI-705C
WP Nutrients	QCI-745
WP Demands	QCI-736
WP Total Residual Chlorine	QCI-785
WP Non-Filterable Residue	QCI-716
WP Total Cyanide	QCI-755
WP Oil & Grease	QCI-770
WP Total Phenolics	QCI-765
WP pH	QCI-713

QCK-804

Kit

ULTRACheck® WP	Minerals	ULTRACheck® WP/DMR-QA Nutrients	ULTRACheck® WP/DMR-QA Demands
11 Analytes		5 Analytes	4 Analytes
calcium		ammonia as N	TOC
chloride		nitrate as N	COD
fluoride		orthophosphate as P	5-day BOD
magnesium		total kjeldahl nitrogen as N	carbonaceous BOD
potassium		total phosphorus as P	
sodium			
spec. conductance			
sulfate			
total dissolved solids			
total alkalinity as CaCO ₃			
total hardness as CaCO ₃			
Sample consists of two solutions. Dilute 10 mL of each solution to 1 L in the same flask for final working test sample.		Sample consists of two solutions. Dilute 10 mL of each solution to 1 L in separate flasks for final working test samples.	Dilute 20 mL of sample to 1 L for final working test sample.
QCI-715	2 x 20 mL	QCI-745	QCI-736
		2 x 20 mL	1 x 20 mL
ULTRACheck® WP/DMR-QA Oil & Grease		ULTRACheck® WP/DMR-QA Total Phenolics	ULTRACheck® WP/DMR-QA pH
total oil & grease		total phenolics	pH
Dilute 10 mL of sample to 1 L for final working test sample.		Dilute 10 mL of sample to 1 L for final working test sample.	Ready-to-use, whole volume standard.
QCI-770	1 x 10 mL	QCI-765	QCI-713
		1 x 20 mL	1 x 250 mL
ULTRACheck® WP/DMR-QA Total Residual Chlorine		ULTRACheck® WP/DMR-QA Non-Filterable Residue	ULTRACheck® WP/DMR-QA Total Cyanide (Complex)
total residual chlorine		non-filterable residue	total cyanide (complex)
Dilute 10 mL of sample to 1 L for final working test sample.		Add 500 mg of sample to 1 L of water for final working test sample.	Dilute 10 mL of sample to 1 L for final working test sample.
QCI-785	1 x 20 mL	QCI-716	QCI-755
		1 x 1 gm	1 x 20 mL

ULTRACheck® samples are formulated to Match NELAC & US EPA WS Program Samples. Please visit our website at www.ultrasci.com for the most updated list of product ranges.

ADDITIONAL ULTRACHECK® BLIND QC SAMPLES FOR NON-POTABLE WATER ANALYSIS

All ULTRACheck® samples are formulated to match individual concentrations as stated in the current NELAC guidelines`

ULTRACheck® samples are designed to mimic real world samples for specific EPA methods, and are run as blind samples. Agreement between the data generated for **ULTRACheck®** used as a blind sample and the true values of the **ULTRACheck®** standard indicates that the analytical system is in control.

ULTRACheck® true values are provided in a separate, sealed envelope. True values fall within the ranges listed for each analyte, and may vary from lot to lot. Complete instructions are included with each sample.

ULTRACheck® Trace Metals

22 Analytes

aluminum (Al)
antimony (Sb)
arsenic (As)
barium (Ba)
beryllium (Be)
boron (B)
cadmium (Cd)
chromium (Cr)
cobalt (Co)
copper (Cu)
iron (Fe)
lead (Pb)
manganese (Mn)
mercury (Hg)
molybdenum (Mo)
nickel (Ni)
selenium (Se)
silver (Ag)
strontium (Sr)
thallium (Tl)
vanadium (V)
zinc (Zn)

Sample consists of two solutions. Dilute 10 mL of QCI-700A and 1 mL of QCI-700B to 1 L in the same flask for final working test sample.

QCI-700 **Kit**

ULTRACheck® Minerals

9 Analytes

alkalinity as CaCO₃
pH
conductivity
potassium
sodium
chloride
sulfate
fluoride
nitrate as N

Ready-to-use, whole volume standard

QCI-710 **500 mL**

ULTRACheck® Hardness

3 Analytes

calcium
magnesium
hardness as CaCO₃

Ready-to-use, whole volume standard

QCI-720 **500 mL**

ULTRACheck® Cyanide

3 Analytes

free cyanide
complex cyanide
total cyanide

Dilute 10 mL of sample to 2 L for final working test sample.

QCI-750 **1 x 10 mL**

ULTRACheck® Total Residual Chlorine

total residual chlorine

Dilute 10 mL of sample to 2 L for final working test sample.

QCI-780 **1 x 10 mL**

ULTRACheck® Oil & Grease

total oil & grease

Dilute 10 mL of sample to 1 L for final working test sample.

QCI-770 **1 x 10 mL**

ULTRACheck® Phenolics

total phenolics

Dilute 10 mL of sample to 2 L for final working test sample.

QCI-760 **1 x 10 mL**

ULTRACheck® pH

pH

Ready-to-use, whole volume standard.

QCI-713 **1 x 250 mL**

ULTRACheck® Nutrients**5 Analytes**

ammonia as N
 nitrate plus nitrite as N
 phosphate as P
 total phosphorus as P
 total Kjeldahl nitrogen as N

Sample consists of two solutions. Dilute 10 mL of each solution to 2 L in separate flasks for final working test samples.

QCI-740 **2 x 10 mL**

ULTRACheck® Demands**4 Analytes**

TOC
 COD
 5-day BOD
 carbonaceous BOD

Dilute 20 mL of sample to 1 L for final working test sample.

QCI-736 **2 x 10 mL**

ULTRACheck® Solids**3 Analytes**

suspended solids
 dissolved solids
 total solids

Ready-to-use, whole volume standard

QCI-711 **500 mL**

QCI-711-100 **100 mL**

ULTRACheck® Inorganic Waste Water Kit**Kit - contains 10 samples:**

1 each of the following samples

Trace Metals	QCI-700
Minerals	QCI-710
Solids	QCI-711
Hardness	QCI-720
Demands	QCI-736
Nutrients	QCI-740
Total Cyanide	QCI-750
Phenolics	QCI-760
Oil & Grease	QCI-770
Total Residual Chlorine	QCI-780

QCK-800A **Kit**

ULTRACheck® Basic Waste Water Kit**Kit - contains 5 samples:**

1 each of the following samples

Minerals	QCI-710
Solids	QCI-711
Demands	QCI-736
Nutrients	QCI-740
Oil & Grease	QCI-770

QCK-801A **Kit**

ULTRACheck® Cations**4 Analytes**

calcium (Ca)
 magnesium (Mg)
 potassium (K)
 sodium (Na)

Dilute 10 mL of sample to 1 L for final working test sample.

QCI-702 **1 x 10 mL**

ULTRACheck® TOX

total organic halides

Dilute 2 mL of sample to 2 L for final working test sample.

QCI-761 **1 x 2 mL**

ULTRACheck® samples are formulated to Match NELAC & US EPA WS Program Samples. Please visit our website at www.ultrasci.com for the most updated list of product ranges.

ULTRACheck® ORGANIC BLIND QC SAMPLES FOR WP NON-POTABLE WATER ANALYSIS

All ULTRACheck® samples are formulated to match individual concentrations as stated in the current NELAC guidelines

FORMULATED TO MATCH NELAC & US EPA WS PROGRAM SAMPLES

ULTRACheck® samples are designed to mimic real world samples for specific EPA methods, and are run as blind samples. Agreement between the data generated for ULTRACheck® used as a blind sample and the true values of the ULTRACheck® standard indicates that the analytical system is in control.

ULTRACheck® true values are provided in a separate, sealed envelope. True values fall within the ranges listed for each analyte, and may vary from lot to lot. Complete instructions are included with each sample.

ULTRACheck® WP Volatile Halocarbons

11 Analytes

bromodichloromethane
bromoform
carbon tetrachloride
chlorobenzene
chloroform
dibromochloromethane
1,2-dichloroethane
methylene chloride
tetrachloroethene
1,1,1-trichloroethane
trichloroethene

Dilute 20 µL of sample to 100 mL for final working test sample.

QCM-105

1 x 2 mL

ULTRACheck® WP Volatile Aromatics

6 Analytes

benzene
1,2-dichlorobenzene
1,3-dichlorobenzene
1,4-dichlorobenzene
ethylbenzene
toluene

Dilute 20 µL of sample to 100 mL for final working test sample.

QCM-106

1 x 2 mL

ORDER ONLINE AT WWW.ULTRASCI.COM

Discover the ULTRA difference in e-commerce.

Designed with the customer in mind, ULTRA's website is easy to use and informative. Search functions allow you to easily find the catalog items you need. If we don't have the items you need in our listings, you can request a custom quote online. Order our latest brochure or catalog too!

Want to purchase standards online? ULTRA Scientific is up to speed. Locate the items you need, place them in your shopping cart and click "Submit". Need product information? Search by method, analyte, catalog number, CAS number or product line. And **when you order online, ground shipping is free!** (Note: additional shipping fees for HAZMAT materials may apply).

ULTRACheck® WP Pesticides**7 Analytes**

aldrin
dieldrin
4,4'-DDD
4,4'-DDE
4,4'-DDT
heptachlor
heptachlor epoxide

Dilute 1 mL of sample to 1 L for final working test sample.

QCM-205 **1 x 2 mL**

ULTRACheck® WP Chlordane

chlordane

Dilute 1 mL of sample to 1 L for final working test sample.

QCM-230 **1 x 2 mL**

ULTRACheck® Organic WP Waste Water Series Kit**Kit - contains four ampules:**

1 x 2 mL of each of the following samples

WP Volatile Halocarbons	QCM-105
WP Volatile Aromatics	QCM-106
WP Pesticides	QCM-205
WP Chlordane	QCM-230

QCK-902 **Kit**

ULTRACheck® WP PCBs in Water

Aroclor 1016/1242
Aroclor 1232
Aroclor 1248
Aroclor 1254
Aroclor 1260

One Aroclor will be randomly selected from the above list.

Dilute 1 mL of solution to 1 L in for final working test sample.

QCM-276 **1 x 2 mL**

ULTRACheck® WP PCBs in Transformer Oil

Aroclor 1016/1242
Aroclor 1254
Aroclor 1260

One Aroclor will be randomly selected from the above list.

Dilute 1 gm of solution to 100 mL in for final working test sample.

QCM-277 **1 x 2 gm**

ORDERING IS EASY

Online

www.ultrasci.com
ultra@ultrasci.com

Phone

800-338-1754
Monday – Friday
8:30 a.m. - 5:00 p.m. ET

Fax

401-295-2330

Mail

ULTRA Scientific
250 Smith Street
No. Kingstown, RI
02852



ADDITIONAL ULTRACHECK® BLIND QC SAMPLES FOR NON-POTABLE WATER ANALYSIS

All ULTRACheck® samples are formulated to match individual concentrations as stated in the current NELAC guidelines

ULTRACheck® samples are designed to mimic real world samples for specific EPA methods, and are run as blind samples. Agreement between the data generated for **ULTRACheck®** used as a blind sample and the true values of the **ULTRACheck®** standard indicates that the analytical system is in control.

ULTRACheck® true values are provided in a separate, sealed envelope. True values fall within the ranges listed for each analyte, and may vary from lot to lot. Complete instructions are included with each sample.

ULTRACheck® Volatiles

18 - 20 Analytes from the Following List:

benzene
bromodichloromethane
bromoform
carbon tetrachloride
chlorobenzene
chloroform
dibromochloromethane
1,2-dichlorobenzene
1,3-dichlorobenzene
1,4-dichlorobenzene
1,2-dichloroethane
1,1-dichloroethene
trans-1,2-dichloroethene
1,2-dichloropropane
ethylbenzene
methylene chloride
4-methyl-2-pentanone (MIBK)
1,1,2,2-tetrachloroethane
tetrachloroethene
toluene
1,1,1-trichloroethane
1,1,2-trichloroethane
trichloroethene

Dilute 5 µL of sample to 100 mL for final working test sample.

QCM-100

1 x 2 mL

ULTRACheck® Base/Neutrals

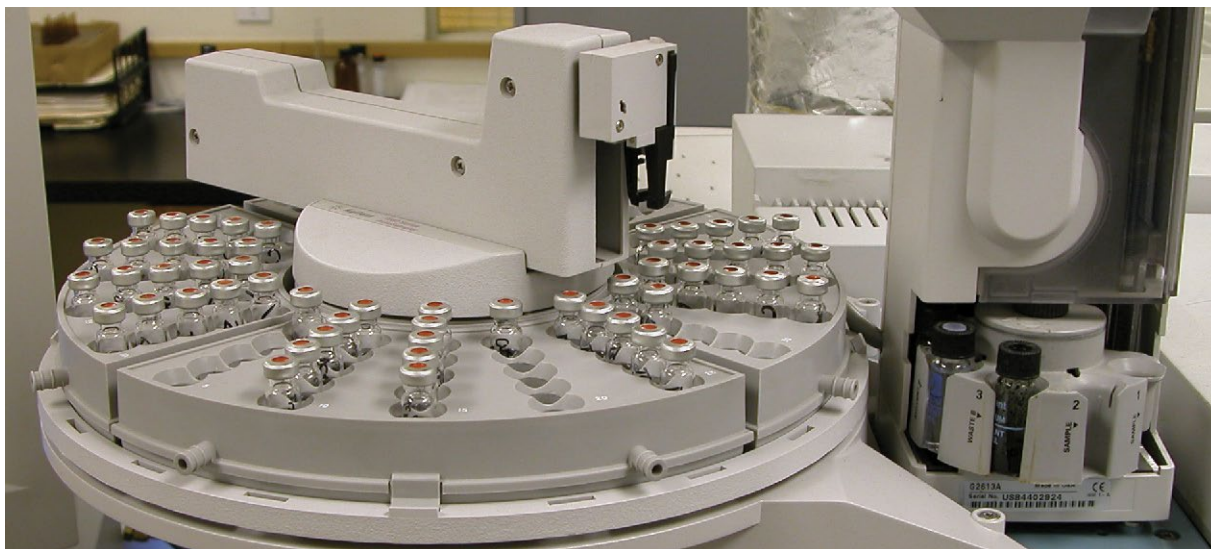
14 - 19 Analytes from the Following List:

acenaphthene
anthracene
benz[a]anthracene
benzo[b]fluoranthene
benzo[ghi]perylene
benzo[a]pyrene
bis(2-ethylhexyl) phthalate
4-bromophenyl phenyl ether
butyl benzyl phthalate
chrysene
dibenz[a,h]anthracene
dibenzofuran
1,2-dichlorobenzene
1,4-dichlorobenzene
diethyl phthalate
dimethyl phthalate
2,4-dinitrotoluene
di-n-octyl phthalate
fluoranthene
hexachlorobenzene
isophorone
naphthalene
nitrobenzene
phenanthrene
pyrene
1,2,4-trichlorobenzene

Dilute 1 mL of sample to 1 L for final working test sample.

QCM-300

1 x 2 mL



ULTRACheck® Acids*5 - 8 Analytes from the Following List:*

4-chloro-3-methylphenol
 2-chlorophenol
 o-cresol
 2,4-dichlorophenol
 2,4-dimethylphenol
 2-nitrophenol
 4-nitrophenol
 pentachlorophenol
 phenol
 2,4,6-trichlorophenol

*Dilute 1 mL of sample to 1 L for final working test sample.***QCM-400** **1 x 2 mL****ULTRACheck® Pesticides***9 - 14 Analytes from the Following List:*

aldrin	endosulfan I
α-BHC	endosulfan II
β-BHC	endosulfan sulfate
δ-BHC	endrin
γ-BHC	endrin aldehyde
4,4'-DDD	heptachlor
4,4'-DDE	heptachlor epoxide
4,4'-DDT	methoxychlor
dieldrin	

*Dilute 1 mL of sample to 1 L for final working test sample.***QCM-200** **1 x 2 mL****ULTRACheck® Chlordane**

chlordane

*Dilute 1 mL of sample to 1 L for final working test sample.***QCM-230** **1 x 2 mL****ULTRACheck® Toxaphene**

toxaphene

*Dilute 1 mL of sample to 1 L for final working test sample.***QCM-220** **1 x 2 mL****ULTRACheck® Organic Waste Water Series Kit****Kit - contains seven ampules:***1 x 2 mL of each of the following samples*

Volatiles	QCM-100
Pesticides	QCM-200
Toxaphene	QCM-220
Chlordane	QCM-230
PCBs	QCM-240
Base/Neutrals	QCM-300
Acids	QCM-400

QCK-900 **Kit****ULTRACheck® Organic Water Pollution (WP) Kit****Kit - contains five ampules:***1 x 2 mL of each of the following samples*

Volatiles	QCM-100
Pesticides	QCM-200
PCBs	QCM-240
Base/Neutrals	QCM-300
Acids	QCM-400

QCK-901 **Kit****ULTRACheck® PCBs***1 - 2 Aroclors from the Following List:*

Aroclor 1016	Aroclor 1248
Aroclor 1221	Aroclor 1254
Aroclor 1232	Aroclor 1260
Aroclor 1242	

*Dilute 1 mL of sample to 1 L for final working test sample.***QCM-240** **1 x 2 mL**

ULTRACheck® samples are formulated to Match NELAC & US EPA WS Program Samples.
 Please visit our website at www.ultrasci.com for the most updated list of product ranges.

ULTRACheck® BLIND QC SAMPLES FOR UNDERGROUND STORAGE TANKS (UST), HYDROCARBON FUELS, & TOTAL PETROLEUM HYDROCARBONS (TPH)

All ULTRACheck® samples are formulated to match individual concentrations as stated in the current NELAC guidelines

ULTRACheck® Gasoline

unleaded regular gasoline

Dilute 1 mL of sample to 1 L for final working test sample.

QCM-600

1 x 2 mL

ULTRACheck® Diesel Fuel

diesel fuel

Dilute 1 mL of sample to 1 L for final working test sample.

QCM-610

1 x 2 mL

ULTRACheck® TPH In Water

TPH (without fatty acids)

One 250 mL whole volume sample to be analyzed for total petroleum hydrocarbons.

QCM-630

250 mL

TPH (with fatty acids)

One 250 mL whole volume sample to be analyzed for total petroleum hydrocarbons in the presence of interfering fatty acids.

QCM-631

250 mL

ULTRACheck® BTEX

6 Analytes

benzene
ethylbenzene
toluene
o-xylene
m-xylene
p-xylene

Dilute 5 µL of sample to 100 mL for final working test sample.

QCM-140

1 x 2 mL

ULTRACheck® Gasoline Additives

4 Analytes

methyl tert-butyl ether (MTBE)
ethylene dibromide
dibromomethane
1,2-dichloroethane

Dilute 1 mL of sample to 1 L for final working test sample.

QCM-620

1 x 2 mL

ULTRACheck® Underground Storage Tank (UST) Kit

Kit - contains five samples:

1 x 2 mL of each of the following samples

Gasoline	QCM-600
Diesel Fuel	QCM-610
Gasoline Additives	QCM-620
BTEX	QCM-140

plus

1 x 250 mL of the following sample

TPH (no fatty acids)	QCM-630
----------------------	---------

QCK-921

Kit

ULTRACheck® Hydrocarbon Fuels Kit

Kit - contains four ampules:

2 x 2 mL of each of the following samples

Gasoline	QCM-600
Diesel Fuel	QCM-610

QCK-920

Kit

ULTRACheck® TPH in Water Kit

Kit - contains two bottles:

1 x 250 mL of each of the following samples

TPH (no fatty acids)	QCM-630
TPH (with fatty acids)	QCM-631

QCK-922

Kit

ULTRACHECK® BLIND QC SAMPLES FOR AROCLORS

ULTRACHECK® Aroclors in Transformer Oil

Aroclor 1242		Aroclor 1254	
<i>Low range in Transformer Oil</i>		<i>Low range in Transformer Oil</i>	
QCM-241	1 x 5 mL	QCM-245	1 x 5 mL
<i>High range in Transformer Oil</i>		<i>High range in Transformer Oil</i>	
QCM-242	1 x 5 mL	QCM-246	1 x 5 mL
<hr/>			
Aroclor 1248		Aroclor 1260	
<i>Low range in Transformer Oil</i>		<i>Low range in Transformer Oil</i>	
QCM-243	1 x 5 mL	QCM-247	1 x 5 mL
<i>High range in Transformer Oil</i>		<i>High range in Transformer Oil</i>	
QCM-244	1 x 5 mL	QCM-248	1 x 5 mL

ULTRACHECK® PCBs in Transformer Oil

Aroclor 1016/1242
Aroclor 1254
Aroclor 1260
<i>One Aroclor will be randomly selected from the above list</i>
<i>Dilute 1 gm of solution to 100 mL for final working test samples.</i>
QCM-277 1 x 2 gm

ULTRACHECK® PCBs

Aroclor 1260	0.5 - 10 µg/L
<i>Dilute 1 mL of sample to 1 L for final working test sample.</i>	
QCM-249	1 x 2 mL

ULTRACHECK® PCBs

<i>1 - 2 Aroclors from the Following List:</i>	
Aroclor 1016	Aroclor 1248
Aroclor 1221	Aroclor 1254
Aroclor 1232	Aroclor 1260
Aroclor 1242	
<i>Dilute 1 mL of sample to 1 L for final working test sample.</i>	
QCM-240	1 x 2 mL

ULTRACHECK® PCBs in Water

Aroclor 1016/1242
Aroclor 1232
Aroclor 1248
Aroclor 1254
Aroclor 1260
<i>One Aroclor will be randomly selected from the above list</i>
<i>Dilute 1 mL of solution to 1 L for final working test samples.</i>
QCM-276 1 x 2 mL

ULTRACHECK® BLIND QC SAMPLES FOR THE EPA CLUSTER RULE

ULTRACHECK® Methanol Sample

methanol	
<i>Ready-to-use, whole volume sample.</i>	
QCM-150	1 x 5 mL

ULTRACHECK® HAP Sample

<i>4 Analytes</i>	
methanol	
acetaldehyde	
propionaldehyde (propanal)	
2-butanone (MEK)	
<i>Ready-to-use, whole volume sample.</i>	
QCM-151	1 x 5 mL